

# SkyWeb

## FLIGHT FOLLOWING

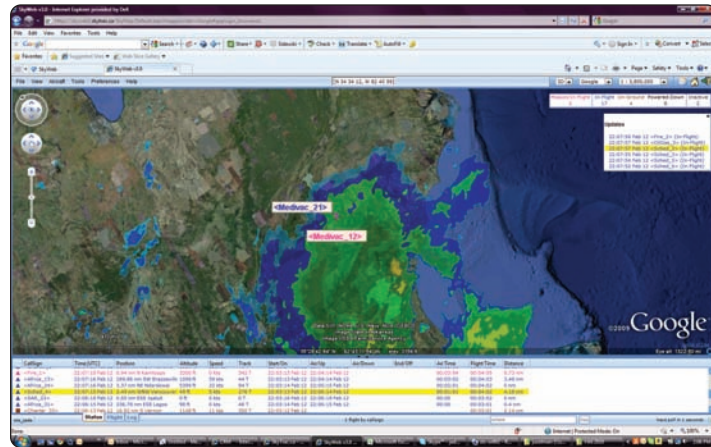
- View aircraft position and flight path in 3D and 2D maps from Google and Microsoft
- Access historical data (up to 12 months)
- Send and receive text messages to/from aircraft
- Calculate distance to destination
- Add custom geographic reference points
- View aviation weather overlays
- Set geofence and flight watch geographical flight restrictions

## MANAGEMENT AND ADMINISTRATION

- Activate, configure and manage assets remotely
- Create/modify secure SkyWeb accounts and assign part or all of fleet to each account
- Assign various access levels to authorized parties
- Analyze historical billing information plus current trend of data/voice usage
- Configure notification list for significant events
- Receive remote mayday notification to cell phone or PDA
- Configure CDP quick messages and telephone numbers
- Forward data to government and other contract entities (AFF)

## REPORTS

- Generate reports on air time or flight time for selected time periods and assets
- Generate reports on system usage



## WEB BASED MAPPING AND ASSET MANAGEMENT

SkyWeb is SkyTrac's web based asset management, mapping, and reporting tool. Designed and maintained by SkyTrac's team of in-house software engineers, SkyWeb is a user friendly and intuitive interface that can be accessed from any computer with a web browser and connection to the internet.

